

TABLE OF CONTENTS

---

<b>THE COMMITTEE .....</b>	<b>2</b>
<b>ABOUT THE CLUB .....</b>	<b>3</b>
<b>EDITORIAL .....</b>	<b>4</b>
<b>TRIP &amp; SOCIAL REPORTS.....</b>	<b>5</b>
<b>Anzac Weekend Mt Trio.....</b>	<b>5</b>
<b>Wanneroo Wanderers 4wd Club Easter Trip to Crystal Springs.....</b>	<b>6</b>
<b>Pizza Night.....</b>	<b>10</b>
<b>Hillside Hot &amp; Spicy Camp over .....</b>	<b>12</b>
<b>Sandy Blight Junction.....</b>	<b>14</b>
<b>SPONSORS .....</b>	<b>40</b>
<b>FUNNIES .....</b>	<b>42</b>
<b>Tech Tips .....</b>	<b>43</b>
<b>First Aid for Snake Bite .....</b>	<b>43</b>
<b>Recognition and First Aid Management of Heart Attack .....</b>	<b>44</b>
<b>UPCOMING EVENTS .....</b>	<b>45</b>
<b>CLUB EQUIPMENT LIST .....</b>	<b>46</b>
<b>BIRTHDAYS.....</b>	<b>47</b>

# THE COMMITTEE

PRESIDENT	Steve Morris
VICE PRESIDENT	John Lyford
SECRETARY	Dave Melbourne
TREASURER	Ray Zaretsky
4WD ASSN DELEGATES	Vacant
PROPERTY OFFICER	Alan Wyatt
FINES MASTER	Keith Granland
TRIP CO - ORDINATOR	Mark Bolton
SOCIAL CO – ORDINATOR	Ray Zaretsky
MAGAZINE EDITOR	Kym Batten
INSURANCE OFFICER	Steve Morris
ADVERTISING OFFICER	John Lyford
HISTORY OFFICER	Elisa Arrigio
TEA PERSON	Lesley Armstrong

## **WANNEROO WANDERERS 4 Wheel Drive Club**

WEB [www.wanneroowanderers.com.au](http://www.wanneroowanderers.com.au)

Facebook <https://www.facebook.com/WannerooWanderers>

Meetings are held on the first Wednesday of the month (except in January when it is held on the second Wednesday, and the AGM in September which is a dinner function). Meetings are held at Warradale Hall in Lansdale - 7.45pm for an 8.00pm start.

Please forward all Magazine Articles to: [kbatten@bigpond.net.au](mailto:kbatten@bigpond.net.au)

# ABOUT THE CLUB



## WANNEROO WANDERERS 4WD CLUB INC



The Wanneroo Wanderers 4WD club is an enthusiastic group of people who have banded together to enjoy 4WD trips and excursions while conserving the natural bush ecology.

Club membership comprises families and individuals of all ages. The range of club activities caters for the novice as well as the experienced drivers. Activities include social functions, day drives, weekend and extended trips both on and off road at various times during the year.

Club members use a range of camping options from tents, troopies, camper trailers and caravans. The club has no preference to the make of 4WD vehicle owned. Personal and vehicle safety during club events is of the utmost importance. Where possible proposed trips are thoroughly planned and surveyed in advance.

The club is an affiliated member of the WA 4WD association and we support the aim to promote 4WD vehicle owners as responsible, community spirited people concerned with conservation and the environment.

The club Meets at the Warradale Community Centre, Warradale Terrace, Lansdale on the first Wednesday of each month except for January when it is held on the 2nd Wednesday commencing at 7:45pm.

Visitors are always welcome to attend meetings and club events. Prospective members are encouraged to attend two club meetings and two club activities before applying for membership.



If you wish to obtain further information about the club, please feel free to contact us at

Wanneroo Wanderers 4WD Club Inc.

PO Box 414

Wanneroo WA 6065

# EDITORIAL

This is a bumper edition chock full of trip reports

It has been a busy schedule over the past 3 months culminating in the extensive Sandy Blight Trip

I have had to leave out some material and saved it for the next magazine

Our thanks to the trip leaders and hosts

Great effort.

Kym Batten

Editor

Wanneroo Wanderers Magazine

[kbatten@bigpond.net.au](mailto:kbatten@bigpond.net.au)



# TRIP & SOCIAL REPORTS

## **Anzac Weekend Mt Trio**

On arrival to campsite Phil Judy & Josh were looking for site suitable for all of us.

Les & Carol arrived soon after. Judy & Josh went for a cycle to the turn off while I went for a short walk on a trail from the camp site.

We were hoping for a camp fire but the season was closed however there was a communal pit fire near the camp kitchen. After an interrupted happy hour and tea, we all turned in fairly early. There was no sign of the visitors and at 10pm Alan & Alison radioed in as they approached the Camp and were guided to the site & soon after Ray arrived.

Saturday morning Phil Judy & Josh had Bluff Knoll in their sites, while the rest of us headed for

Albany as Alan had some work to attend to. Alan & Alison took a direct route whilst the rest of us went via the Upper & Lower Kalgan River having morning tea at Lower King took a scenic route around Marine Drive and met up with Alan & Alison at Little Grove. From here we went to the Gap & Natural Bridge to see the new viewing platform over the Gap. On the way back we went to the wind farm for lunch and took a look around the wind farm and coastal boardwalk. Alan had to pick up his work trailer at 2pm in Albany so we headed back to camp to join Judy & Phil who had returned from Bluff Knoll. Happy Hour and we had tea then went down to campfire to entertain the other campers.

Sunday 8am start to climb Mt Trio Phil & Josh, Alan & Les x 2 set off, was a good climb to see just how fit or unfit we were. Surprise we all made it to the top. Josh spotted a snake on the way down and we came across some lads that were going to climb the rock face. On return Phil, Judy & Josh were heading back to Perth as they had been on the road for some time doing their cycling in readiness for Spain. The remainder of us did a pleasant Drive through the Stirling Ranges lead by Ray taking in the camping areas & lookouts & springs.

On return happy hour commenced and tea before dark then off to the campfire for a couple of hours before turning in.

Monday it was pack up and off home

Had very good weather good camping spot and overall a good weekend.

Thanks Mark for doing the ground work to make the weekend come together.

## Wanneroo Wanderers 4wd Club Easter Trip to Crystal Springs

Article by Michelle

Attended by: Bob & Leslie {Pathfinder} Alan, Alison & Shaun {Troopy} Mark {Troopy}  
Graham, Michelle & Kids {Suzuki GV}

Bob, Leslie and Mark arrived to the DPaW Crystal Springs in D'Entrecasteau National Park on Thursday 24<sup>th</sup> March and managed to reserve a great corner of the Campsite for the rest of the group.

### Friday 25<sup>th</sup> March

Graham, Michelle & Kids arrived on the Friday morning after leaving Perth at a ridiculous time in the morning and Alan, Alison & son arrived just before lunch.

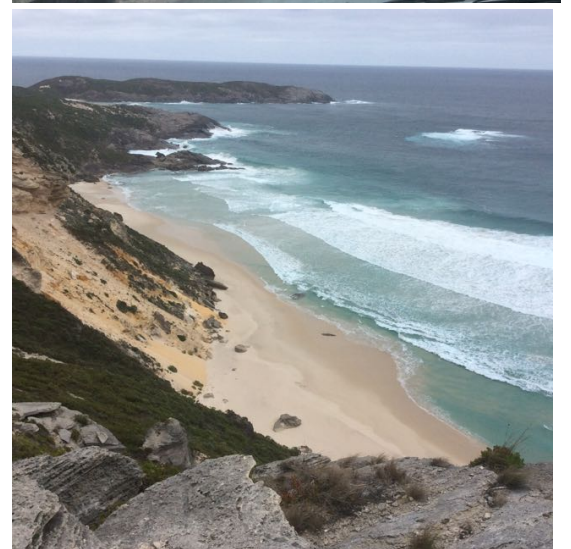
After tents were set up and lunch was eaten, Leslie organised an afternoon drive to see the local beaches. We left the campsite and drove down Long Point Road to Hush Hush Beach. The road was a sand track which was an easy drive with a few soft patches. The road took us past some large rocks that Edward wanted to climb up and place a flag on the top, just like the episode on Top Gear he had seen.

We passed lots of lush greenery which was pleasant to see after the dry brown of Perth and took the well maintained track to the parking area at Hush Hush. We walked down the track and took some beautiful photos of the beach.

We all jumped back into our cars and carried on to Long Point. Once parked up, Edward led the way down the track until we heard a scream that he had just sighted a snake and he came running back. Ignoring the possible snake sighting we carried on to view the rocks, beach and possible sheltered camping spots.

As it had now turned 3 o'clock we decided to miss Little Long Point and head on to Lost Beach. Nobody wanted to take the 3K walk option so we all drove to the Lost Beach parking area. We explored the track there and Alan managed to climb down part of the rock face. More photos were taken of the beautiful beaches.

At about 3:40, we drove back to camp. On arrival the camp area had been overrun by a tent village blocking off our access to the communal table and water tap. Edward commented it looked a bit like a refugee camp that he had seen on TV. Happy hour was provided by Leslie followed by a quick game of bocce with the kids. After a brief yarn, it was an early night for all.



Saturday 26<sup>th</sup> March

After a satisfying breakfast we left camp at 9 o'clock and headed down the Fishermen Track to Mandalay Beach. This was a hugely corrugated road which bounced the cars about causing the Grand Vitara to lose a bow shackle.

We parked at Mandalay Beach car park and took walk down to the beach viewing the historical plaques along the way. There were several fishermen down on the beach which the kids wanted to go and watch.

We left to drive the track to Red Rock. There was a tight car park which we managed to squeeze into and we walked to the viewpoint. The children loved the red rock



and collected several pieces to bring home; we also observed a large pod of dolphins playing in the surf. Back into the cars and continuing on Fishermen Track to Broke Inlet. We stopped at the side for morning refreshment then pushed on and found



a lovely little campsite next to the inlet with a tin shack and visitor book.

After a quick explore, we followed the track to the beach, the sand was very soft in places and some of the dunes were quite steep to descend.

We reached the mouth of the inlet and this was very busy with Easter campers, the beach was lovely and very popular with fishermen. It was a great spot to camp and well worth the 22k drive in.



We decided to head back to the previous camping spot to stop for lunch and stretch our legs. There



was a brief incident when passing cars on the narrow track that managed to get sorted after a lady blocked the track preventing Alan & Alison from passing.

After lunch we headed back to camp and Leslie and Michelle went on a trek to check out the Wool bale rocks found in the surrounding bush.

Another enjoyable happy hour but unfortunately the kids not too happy as they were missing the camp fire and didn't have anywhere to cook the marshmallows!!



Sunday 27<sup>th</sup> March

This was a packed day and after saying goodbye to Mark we left the campsite at about 8:30 and headed towards



Walpole. We left the main road and followed a track to view the last wooden bridge built. After a brief misunderstanding with the landowner, we were able to view the bridge and the children were intrigued to see if there



was a grumpy old troll living underneath it. It was pointed out that we may have met him already!

After a quick visit to Walpole to stock up on drinks and camp gas, we drove on to Mt Clare. We walked to the viewpoint and took in the unusualness of the tingle trees.

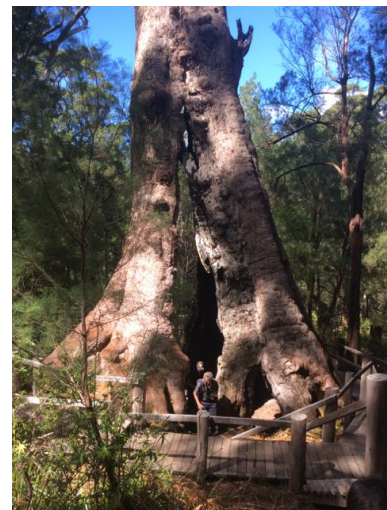
Back in the cars and on to the Giant Tingle Tree. We walked the loop, the children loved exploring the inside of the trees and climbing where ever they could.



After stopping for lunch by the Frankland River we headed onto the small jetty for Leslie and Shaun to take a canoe up the river.

The rest of us found a track further upstream to go and meet them. The kids had a quick go in the canoe and then enjoyed feeding the fish with bread. Charlotte said this was the highlight of the whole trip.

After picking up the Canoeists we headed back to camp for happy hour and dinner, stopping on way at the bottle shop to pick up much needed supplies.



Monday 28<sup>th</sup> March

The remaining campers packed up after breakfast and we all headed back to Perth. The weekend had been great and thoroughly relaxing.  
Thank-you to Leslie for organising a fantastic trip.





## Pizza Night

Article by Mirella DiGeorgio 16 April 2016

Thanks to Paul & Mirella for hosting a wonderful pizza night once again.

Some old faces, new faces and familiar faces enjoyed the delights of Paul's pizza making skills.

The annual PIZZA NIGHT at the Di Giorgio started well with lots of members and a few of the old ones.



Paul started his day in the morning going up and down to the pizza shop making pastry and getting all the ingredients ready for the night.

When the members (friends) started coming in, Paul was on his glory making pizzas and showing off his skills and making sure everybody had their belly full of pizza.

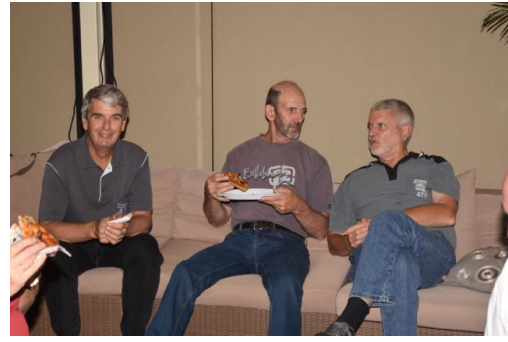
Paul and I hope that everyone enjoyed the night like we did and waiting for next year (if we are not roaming Australia)



### OLD MEMBERS

Mark Henderson & Tina Barnes  
Vince & Chris Serra  
Des & Pauline Oehlman



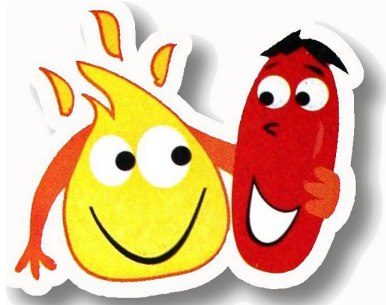




## Hillside Hot & Spicy Camp over

Article by Penny Clark

14 & 15 May 2016



Perfect weather for the WW, hot and spicy night. A few campers arrived a few days earlier and some left a few days later, so lovely having time to catch up with so many of you.

All seemed to love camping in the paddock, mown by the sheep few days before. We had a wonderful campfire every night, thanks Joe and all the helpers. They managed to clear another area of fallen trees, thank you it looks amazing.

Once again the dogs and children all had a simply wonderful time. The dam was a certainly a draw card for the dogs as usual. Many walked around the property and enjoyed the beautiful views and greening landscape. Others sat around the fire chatting and relaxing, a few continued to work on the cottage.



The hot and spicy night was as usual simply amazing, the variety of dishes incredible and ohhh so tasty. Thank you, Jenny for making the fresh fruit salad, perfect after the array of food consumed by all. Another night under the stars basking in the warmth of the fire, looking at the stars.



Unfortunately, sleep was not perfect as we had unruly neighbours a few kilometres away doing burn outs at random times of the night. We will have to make sure we don't clash with their function again. During the night a fox decided he





would also partake of any leftovers jumping up on the table and devoured everything but the rice!!! I'm sure he was not feeling the best after those hot meals.

Thank you everyone that came up and made the night so special, we look forward to having you all out there again.

## Sandy Blight Junction

Article by Sue & Steve Morris, Kym Batten

4/6/16

All met at The Lakes where we encountered a demolished service station and our first two fines. Ray Z managed to back into the temporary fence and Les & Carol Crombie arrived late.

Participants were Steve & Sue Morris (trip leader), Ray Z, Ray Willis & his brother Steve, Alan Wyatt and son Daniel, Les & Carol Crombie, Bob & Leslie Armstrong, Kym & Glenda Batten.



Ambled towards Kalgoorlie stopping at Merredin for Lunch. Arrived at lake Douglas around 4:30 and it was already getting Dark. There was light drizzle as we set up camp and lit the camp fire. Tony Downe arrived shortly after.

5/6/16

Left camp around 9am. Ray Willis had to go and get a new battery while the rest of us headed to the super pit. After regrouping we headed off for Laverton via Yarri road. We stopped morning tea at



Gindalbie.



Carried on Yarri road and reliving past trips memories. After stopping for lunch in a gravel pit where we discovered some rather



interesting ant nests, we then proceeded toward Laverton, necessitating crossing Lake Raeside. Due mining activity, the roads had changed and the old road was now disused, so I completely missed the turn. Tracking back, we found the old road and travelled across country until we picked up the new road which apparently comes in near Sunrise Dam. Crossing Lake Raeside was via a formed road and causeway which was quite slippery at times and stopping for a photo shoot on the causeway. We carried on until we found a camping spot about 17 km from Laverton as it was getting Dark.



A pleasant camp fire was prepared and cooked on even though it was a little wet. After many had retired Ray Willis managed to fall over his tent and break his toilet seat. A camel was heard wandering through the camp later that night

Les & Carol we've having trouble with their tent leaking.





6/6/16

Broke camp around 8:30 and headed to Laverton to fuel up and meet up with John Stoffels.



After mooching around Laverton for a couple of hours we finally headed off with the two Rays leading and advance party and missing the points of interest.

Finally regrouped and continued to amble up the Great central road, but the further east we went the wetter it got with road becoming quite slippery. With visibility very low.



Tony managed to get the troopy sideways at which point he decided to put into 4WD.(I think that was a fine.) As it was late we camped at Tjukayirla roadhouse.

7//6/16

We departed at 8:30 after fuelling up and headed for Warburton.

On the way we detoured to find the Terhan Rockhole as the Road had been realigned. Hence we ended up on the original part of the Great Central road. It was a beautiful spot and the hole was very deep.





It just rained and drizzled all day and just as we were about to leave Warburton, we were told the road was closed.

Parked up in compound for the night. No alcohol or camp fire.

All made use of camp kitchen, and shower facilities.

8/6/16

Left Warburton just after 9am after roads were opened and headed down the Great Central Road to Warakurna (Giles). We detoured into some different spots for lunch and morning teas.



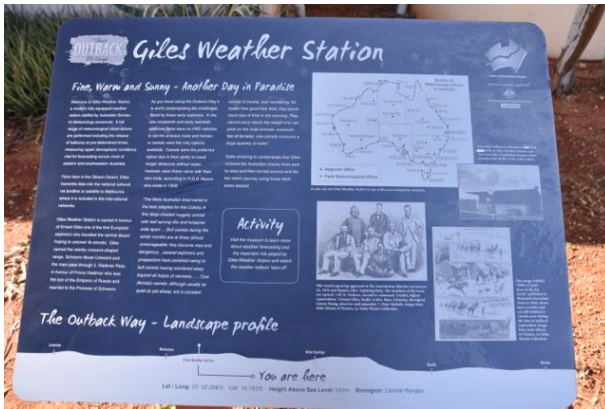
At

Tjulun Rockhole, we encountered a young lady who was camped there and was driving a classic 40 series Toyota. The Rockhole was deep with a tripod arrangement over the top. The hole was full of fat tadpoles

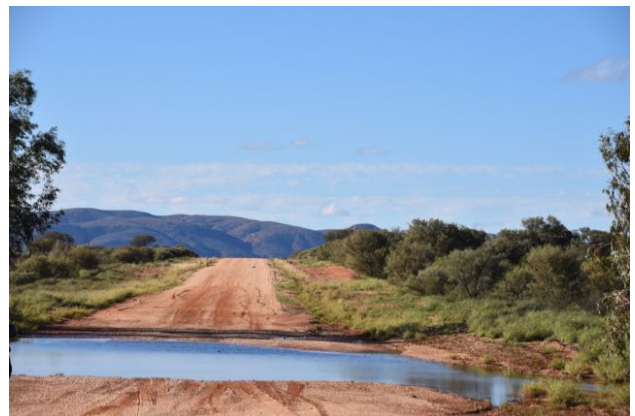
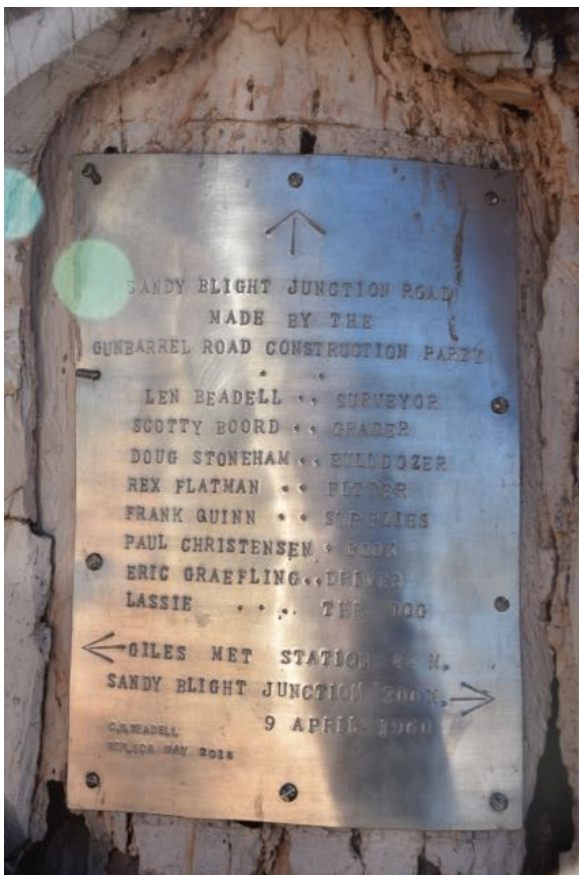




After refuelling at Warakurns, we headed to Giles Meteorology station for lunch and a quick look around.



After lunch we carried on to the First Len Beadell marker which was originally the end of the Gunbarrel Hwy and the start of the Sandy Blight track.



After a photo shoot headed off to the Sandy Blight track turn off before looking for a camp site for the night.





**Schwerin Mural Crescent**

9/6/16



After a cold night, packed up and took a walk through the bush to find the river. Found the river, which was dry. Some members attempted climbing the hill adjacent to camp.

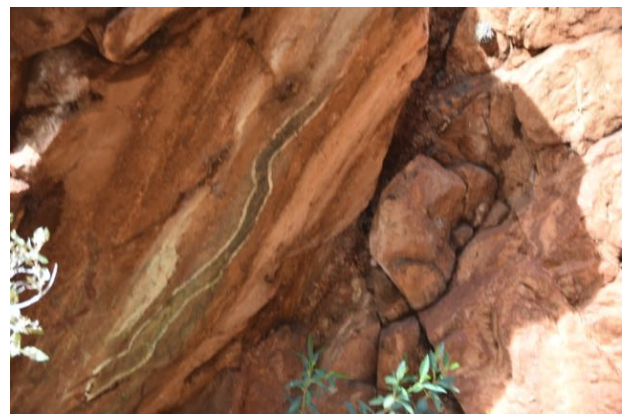


Headed off after the walk to river, but there was no water, but plenty of birdlife. Left camp around 10:30, with the Walter James ranges looking fantastic as they stretched out in front of us.





Our first stop was the Bungabiddy Rock hole.



Just a beautiful spot, with waterfalls and a fresh water pool which Leslie had the mandatory swim. We met with two ladies, the local school principal and curriculum supervisor, who swim there regularly during summer





After morning tea headed off to the next way point. Drove through beautiful dune country stopping off at the Len Beadell 100 mile and half way plaques On the way we encountered a mud hole and another 4WD group heading south.



We then encountered a magnificent forest of desert oaks (similar to a Sheoak) a dingo and a Bastard before arriving at another Len Beadell Blaze Tree

Had trouble finding a camp site, but we eventually found one under some attractive desert oaks









10/6/16

From camp site, we backtracked to Sir Fredrick Range, approx. 7 Km to turn off then a rough track into the base of the range. From there was a three stage climb each becoming more difficult. The



climb was a covered in loose river stone type rock. The second and third stage was heavily rutted.

Steve Bly had a couple of attempts to climb stage 3 and Bob Armstrong did not have the ground clearance to make the climb.



SEARCHING FOR ALIENS



The view from the top was a 360-degree panorama. After the obligatory photo shoot, we descended the hill slowly. Morning tea at the base.



After a short stop headed for the next Len Beadle plaque. After short stop carried on before finding a working bore. Some members took to the opportunity to replenish water supplies or clean windscreens etc.



We carried on to the WA NT border. A quick photo shoot and off to find a camp for the night.







On route we passed through a mud hole in which Alan got the troopy hung up on the dif. (Alan is making a habit of this). John Stoffels snatched him out. Then Ray Willis tried and just drove straight into the hole. This time Alan snatched Ray out. Bob Armstrong and Steve Morris opted for the chicken track. Rays punishment was to wash John's snatch strap

We then carried on to find a camp for the night.  
Just south of Kintore

Another good fire and most opting to use their camp ovens with Leslie cooking a loaf of bread.





11/6/16

Woken @ 2am by sound of a car arriving and stopping for the night. Slightly restless night only to awake to find Les & Carol had driven back from Perth with a new tent to re-join the trip.



REMAINS OF TIEKINS TREE

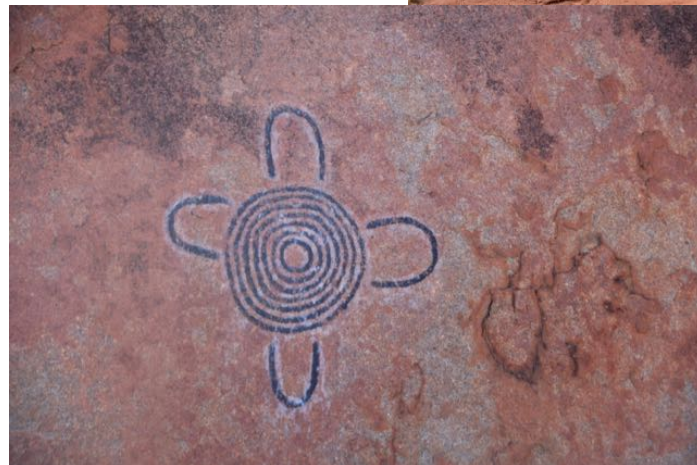


After packing up headed for 200-mile rock and morning tea at Tietkins tree.

We then made our way to Kintore over corrugated roads for fuel and restocking supplies. Arrived at Kintore around 10 am (More dogs than people) and began refuelling

process from one bowser. The store was selling large numbers of Kangaroo tails.

After filling up headed for to Kintore Marbles for Lunch and then onto Sandy Blight Junction where we took the obligatory photos.







We then proceeded down the Garry Junction Highway which was in superb condition. albeit a bit boring



Quite a few camels seen on this road.



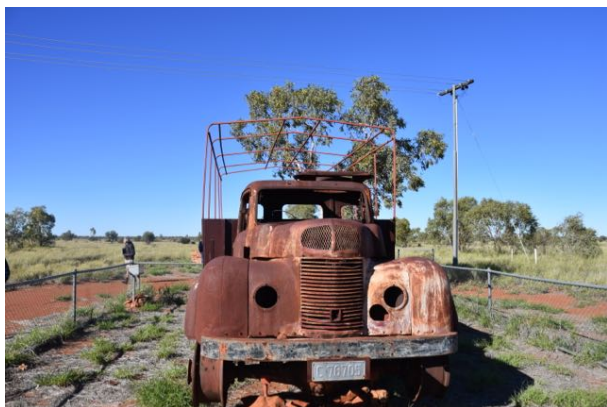
Again crossing the border into WA

We found a camp site on the side of the road. The obligatory happy hour, camp fire cooked food and damper ensued.



12/6/16

Left camp around 9am and headed for Kiwirrkurra community to look at Len Beadles original supply truck. Nothing open as it was Sunday. Ray Willis



tried contacting the locals to see if we could find some rock art. We headed off to the Pollock Dunes. Initial track proved to be incorrect, so after returning to main road found the correct track about 50 metres further on. The track was largely unused and overgrown. John Stoffels was leading and after deviating from the track, and



losing site of the car tracks, we circled back onto the track after some clearing of the track and traversing a sand ridge. Once on the track we headed onto the same route only to find the track was closing in. At this point we decided to retrace our steps but this time rolled the original road. This track turned out to be the original highway before a realignment

After returning to the highway we headed for Jupiter well. This was an oasis in the desert with beautiful water.



Most took the opportunity to shower, clean off the mud from the cars, replenish water supplies and relax by a large camp fire courtesy of Tony Downe

13/6/16

Before leaving camp we took a walk to explore the original well. We then headed for Garry Junction. Here we deviated across country via an overgrown track resulting in some bush bashing. There was no signage to advise that the track was not to be used until we reached the Canning Stock route to well 35 where we camped for the night. Ray Zaretsky had picked up stake, requiring a tyre change



This well was in poor condition producing only Black water

ORIGINAL WELL



14/6/16

Headed off around 9am down the CSR. The track was heavily corrugated and progress was slow. We stopped along the track to repair Tony's aerial which had a broken mount, and also noticed Ray Willis's car was smoking and smelled of burnt oil. After investigation, we found both front shock absorbers had failed. We bypassed well 34 and went straight to



WELL 35



Well 33 for lunch before heading into Kunawaratiji for fuel and re supply. This was the most expensive fuel in Australia at \$3.40 per litre. Many members took advantage of a shower \$10 and filling water tanks. After leaving Kunawaratiji, headed for the Garry Highway and an overnight camp.

WELL 33

15/6/16

Left camp late today for a short journey to Wormy Whau Whau well for an overnight camp. Before setting up camp detoured to Veevers Meteorite Crater. Veevers meteor



VEEVERS METEORITE CRATER

crater is only small but clearly defined.

Ray Willis managed to back into a tree or rock damaging his rear bumper and tail light. We signed the visitors book before heading back to Wormy Whau Whau well for an early camp and relax.



Wormy Whau Whau well comprise of two capped bores with water a long way down. It was named after the drillers Wormy and Whau. And drilled to provide water for oil and gas exploration. The camp site was picturesque with lots of bird life and signs of other animal which so far we had been devoid of.



Ray and his brother Steve put on a Wine and Cheese night. A nice selection of Cheeses, wines, good company and a few laughs. What a better way to end a day.



16/6/2016

Woke to an overcast day, but not too cold. Sue and Steve took a short walk through the rivergum's, but no sign of water despite the bird life.

Departed camp at 8:40 for Windy Corner.

First signs of Kangaroos. Found a track which was supposed to lead to a rocky outcrop and cave, but it was too overgrown, so we did not bother. Ever changing countryside, beautiful in parts, with plants in flower and different shade of green. Saw two wallabies. Frightened a camel from behind a bush Steve & Sue caught a camel running at 28KM per hour on video. Stopped at Windy corner for morning tea







WINDY CORNER

Continued on to find a lunch spot, just had to pull over when there was a break in bush or spinifex. Surprising country for a desert. Who would have thought? Continued on to McDougalls Knoll. Nice little lookout. We then started looking for a camp site early as it looked like rain ahead. Camped in a rough camp ground beside the road, but there was plenty of room and wood for a fire.



17/6/2016

At this point the Ray and Steve decided to head straight for home, while Ray Z carried on with the rest of his trip.



Leslie and John Stoffels started with their usual morning 10 K stroll, while this time Sue, Glenda & Charlie headed off as well.

After the convoy caught up with the hitch hikers, we carried on to Lake Cohen. We had clear skies and a chill in the air.



As we approached the lake a plover was distinctly unhappy, making lots of noise and swooping. It must have had a nest nearby.



This was an impressive body of water and must have been quite deep, judging by the tree trunks. The map shows it as marsh lands for migrating birds.

We then made our way to McPhersons Pillar. Good track with lots of Scenic spots including a small lake which we made our way back to for lunch later. From the top of the pillar there were great views, and Tony commented it



looked like a scene from Jurassic Park as you looked out to the camels grazing in the valley below.



One camel looked large and possibly pregnant. Kym found a lizard in the rocks which showed no sign of moving.







After morning tea, we headed for Mulgan Rockhole, a short distance away. Tony stopped to repair the signpost that was pointing the wrong way. The track was rough and the rock hole was a little disappointing. After leaving the Rockhole, we headed back to the lake we saw on the way in for lunch. During lunch, a couple of camels wandered by.

We headed back to the main highway to look for a suitable camp site. There was plenty of water around and Termite mounds which were inundated with water.



already there having walked 8.5 Km from camp

Found a camp site on the side of the road, and again no trouble finding wood for a camp fire.

18/6/2016

Left camp at 8:45 in pursuit of the 2x2 walkers who had left earlier. The road was rocky making it slow going We made our way over the Youngs Ranges to Charlies Knob. John & Leslie were





JOHN & LESLIE ATOP CHARLIES KNOB



SUNDIAL

After scaling Charlies Knob, we set off for Everard Junction where stopped for morning tea. We saw a first vehicle in days, a group of motorbikes and their support vehicle. They were travelling from Airlie NSW to Fremantle. The road continues to be ever changing, rocky, sandy, washouts and corrugations. We caught up with the support vehicle which was bogged trying to detour around a water logged track. They said they had dropped their tyre pressures from 120 to 50. Steve tried



EVERARD JUNCTION



pulling them out to no avail. They had first put the tow rope around the tow ball of the truck which we objected to and the tow rope had a knot in it where it had been joined. (Not Happy)

Tony came to the rescue using John's heavy duty snatch strap and after several attempts of trying to pull it backwards the truck veered off the tracks into the soft mud. It was then decided to try pulling from the front of the truck in a slightly sideways pull. After a couple

of attempts, the truck was free. Both Tony and Alan had walked the water logged track, and all crossed through the water hazard with no difficulty.

Continued along the Gunbarrel Highway to the Geraldton Historical Society Bore where we could refill our water There was a Gentlemen there who had ridden on his bike all the way from Tasmania. He had







full tread on his tyres when he left and now had none. I think we disturbed his lunch break. After our late lunch we set off for Mungilli claypans 53 Km away.



The road continued to have patches of water, mud & straight fast stretches.



The terrain changed to long Grass and Mulga country, before we reached the claypans where we found a nice camp site overlooking a lake, stopping around 3 o'clock Plenty of birdlife and a nice lake to walk around.

19/6/2016

Woke up to a group of Dingo's howling, possibly young across the lake looking for their parents who were around the camp. John who was sleeping under the stars awoke to find a dingo nearby, so he started making noises to keep it away. He beats his boots on the ground, but the Dingo just looked at him.



THE DANCING SHOWER TENT

Back to seven vehicles today as Les and Carol decided to part company. Left camp at 9am heading Empress Springs via the David Carnegie Road. On route to the Windich Rock hole, Kym who was leading radioed in a sharp sandy corner on return to the main track. Unfortunately, Bob failed to take the bend and stopped. Before they radio that they had stopped,

Steve Bly ran into the back of them. Made it into Windich Rockhole where damaged appeared a little more substantial than first thought, but all OK to continue. Could not find the points of





interest, so we returned to the main road. The main road was slow going in parts with lots of washouts, detours and rocks.



Stopped for lunch on top of a hill with 360 degree views. Heading towards Empress Springs, the landscape continually changed from rocks to sand to varieties of spinifex. We decided to stop at yet another small lake as Empress Springs may have been too tight to fit us all in. On the way Tony spotted the biggest Bastard he had ever seen



Hearing Dingos in the distance we enjoyed another Damper around the camp fire

20/6/2016

Left camp at 8:50am for Empress Springs and to find the walkers John & Leslie who had set off an hour before. Morning tea at Empress Springs. Not much a camp site, lucky we stayed where did the previous night. Most climbed down the chain ladder into the



of



water hole, but you need to crawl though on your belly to actually get where the water is. Naturally Alan was the only one who did. He added some more interest to our journey. A group photo was taken at the top.





Now we are heading to Breaden Bluff Aboriginal caves. At the caves turnaround point we met a couple who were upset that the Sandy Blight Junction road was closed for four weeks. I think we were lucky.

The series of caves were visible from a distance. They were amazing to say the least with plenty of animal activity evident.



Back on the road and onto Tjukayirla to refuel before looking for a camp site.

We managed to find a spot off the road and setup just before the rain set in. It was an early night due to the rain even though it was party night – Music, Nibbles and good company

21/6/2016

Woke to find the ground was not too muddy, and after breakfast headed to Laverton, where Tony, Bob & Leslie parted company for Kalgoorlie.

The rest of us headed towards the Leonora Kalgoorlie road via the old Laverton road. But when we got to Malcolm, the road south was closed and in fact all roads in the Menzies shire were closed. So we detoured via the bitumen to Leonora before taking the road to Canegrass, and Siberia. The road was very slippery in patches, and it was getting Dark, so we found a nice camp site just out of Siberia. No more rain thank Goodness!

22/6/2016

Woke to a chilly (1 Degree) but dry morning. Steve Morris checked out his faulty indicator light, and found a rock had penetrated the rear plastic of the taillight assembly. He replaced the faulty globe and carried out some repairs. Before leaving camp at 8:15, went for a short walk to check out some



mining activity. Headed via Ora Banda to Coolgardie. The road was very wet and Sludgy in lots of places necessitating some caution.

After reaching Coolgardie, we made a beeline for Home

Another interesting and fantastic trip

# SPONSORS

Wanneroo Wanderers acknowledge and thank our generous sponsors.



BOATING • CAMPING • FISHING



## Go Camping

(08) 9344 6252



Your locally owned and operated Camping Specialist!

- Home
- Products
- Freedom Tents
- Hillbilly Camping Gear
- AusPit
- Outdoor Connection
- Flex-Bow Canvas Tents
- Aussie Outback Supplies
- PeterG's
- BioMagic
- A Shade
- Solo Stove
- About us
- Contact Info

Welcome to Go Camping a family owned and operated business. We have been operating for over 25years. We pride ourselves on honest service and quality products.





# RAYS

## Ray's Outdoors

Retail and Consumer Merchandise

<http://www.raysoutdoors.com.au/>



**WANGARA**

9409 1400

**WELSHPOOL**

9258 9002

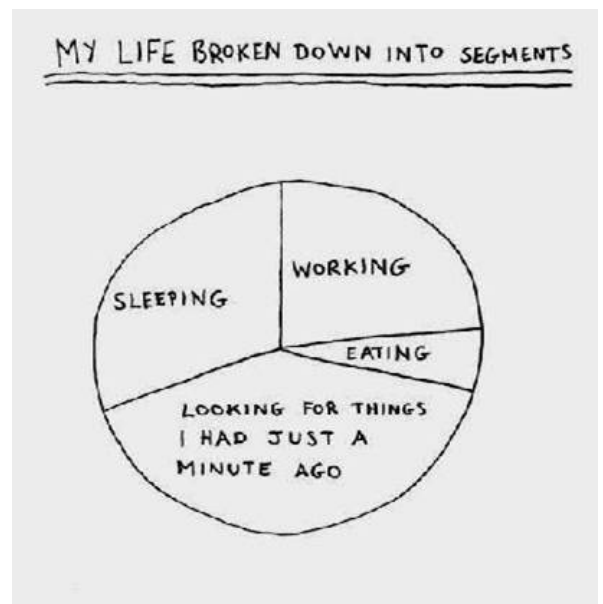
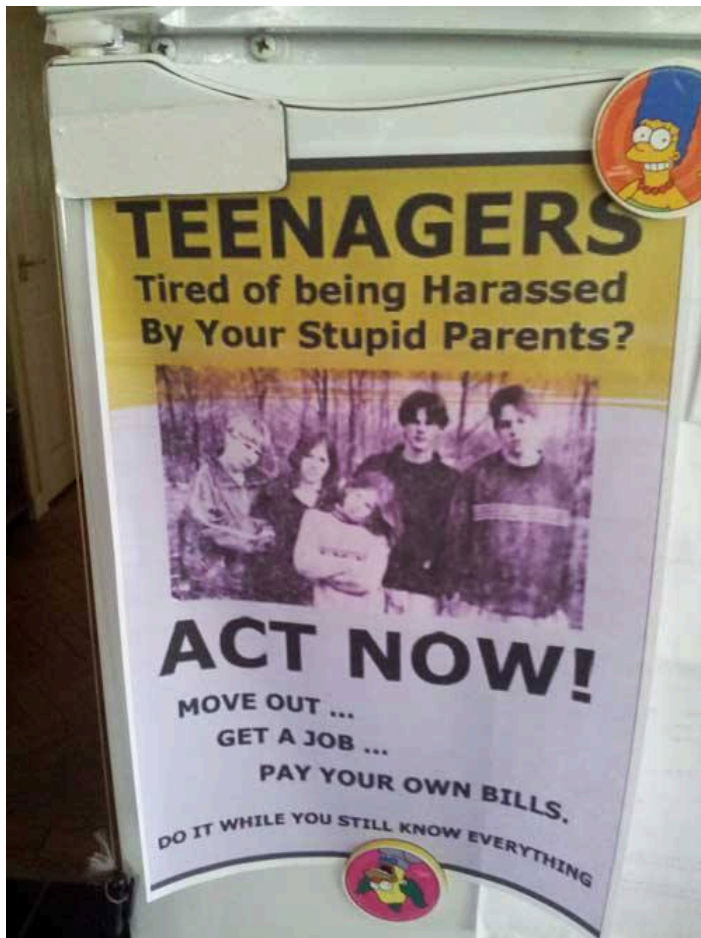
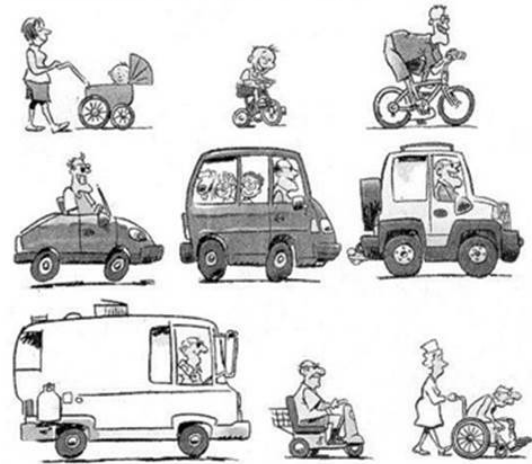
# FUNNIES

Copyright 2002 by Randy Glasbergen. www.glasbergen.com



**"The healthiest part of a donut is the hole. Unfortunately, you have to eat through the rest of the donut to get there!"**

## The Wheels of Life



***"Blessed are the cracked.... for they are the ones who let in the light."***



# Tech Tips

## First Aid for Snake Bite

This first aid information for treating snakebite was compiled with the assistance of the RFDS on the road program. Photos of patient take during demonstration by Bob Cooper during his Snake Handling Course given at the Exploreoz National Gathering.

- Calm & reassure the patient. Be sure to keep the snakebite victim still.
- Do not cut, wash or suck the bite.
- Apply a pressure immobilisation bandage starting from the area over the snakebite. The pressure must be firm, but not tight. It needs to compress the skin without restricting blood circulation. If an elasticised bandage is available use this, if not, any other bandage or material that can be wrapped around to create a firm pressure should be used.
- Usually bites occur to limb extremities, so bandage down the limb towards the fingers or toes leaving the nails exposed. This allows blood circulation through the limb to be monitored. Continue bandaging by wrapping back up the limb, covering the existing bandage, into the armpit or groin.
- With a pen, lipstick, charcoal or any other marker, place an X on the bandage to indicate the position of the bite site below. The time of the bite can also be recorded there.
- Without elevating the limb, splint the elbow or knee. Use a stick, rolled newspaper/magazine, etc. anything that won't bend easily.
- If you are alone with the victim, and they need to be moved to a vehicle or shelter, it is best that you organise assistance. If this is not possible, keep the victim's movement to a minimum.
- Urgent medical attention is required. All snakebites must be treated as life threatening! Contact 000 OR, if in a remote location, call the Royal Flying Doctor Service on 1800 625 800 or (08) 9417 6389.



Main points to remember:

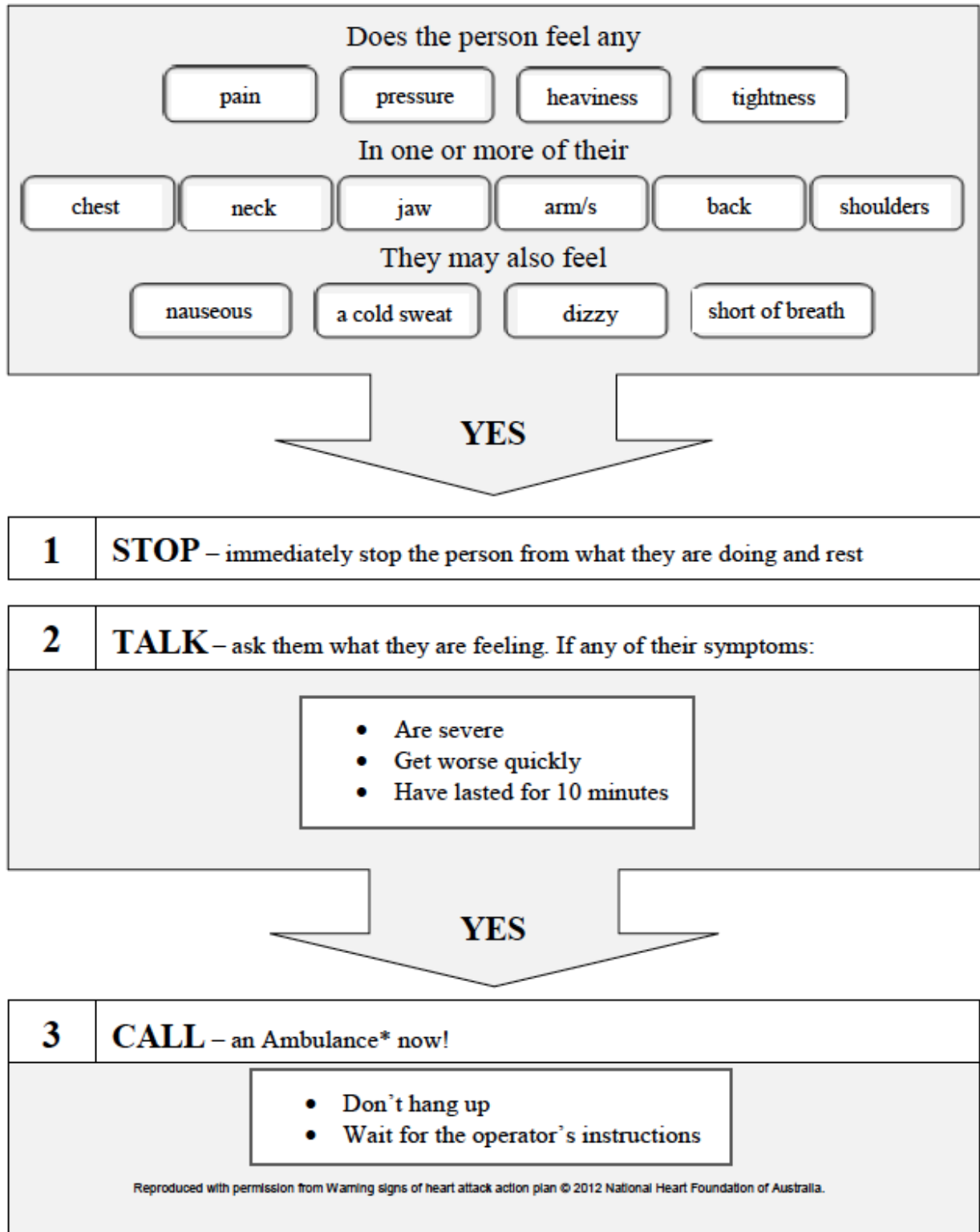
- DO NOT elevate the bitten limb.
- DO NOT attempt to catch the snake for identification
- DO NOT remove the bandage.

This article courtesy of Exploreoz website

## Recognition and First Aid Management of Heart Attack

(From Australian Resuscitation Council Website)

### Warning signs of heart attack action plan



\*Within Australia call Triple Zero (000), within New Zealand call Triple One (111).



## UPCOMING EVENTS

**WANNEROO  
WANDERERS  
4WD  
CLUB**



### Wanneroo Wanderers 4WD Club – 2016

#### Trip and Social Events – Fridge Flyer

Date	Event	Leader	Social/Trip	Van Friendly	Dog Friendly
7:45 First Wednesday of each Month	Club Meeting 2016. 13/1, 3/2, 6/4, 4/5, 1/6, 6/7, 3/8, 7/9, 5/10, 2/11, 7/12	Warradale Community Centre, Southmead Dve Lansdale			
<del>7-8/5/2016</del>	Hillside- Hot & Spicy	Dave & Penny Clarke	Social	Yes	Yes
6-25/6/2016	Laverton to Sandy Blight	Steve Morris	Extended Trip	No	Yes
9/7/2016	Bonfire Night	Ron & Angela Francis	Social	Yes	Yes
20-21/8/2016	Wildflower run – Camel Soak			Yes	
2/9/2016	AGM				
24-26/9/2016	Whicher Ranges	Tony Downe	Trip/Social	Yes	Yes
15/10/2016	Wine & Cheese Night		Social		
29-30/10/2016	Lake Indoon/Pinnacles				
11-13/11/2016	Perth 4WD Show				
26/11/2016	Golf Comp	Steve Morris	Social		

## CLUB EQUIPMENT LIST

		MEMBERS NAME	DATE REQUIRED	DATE RETURNED	PASSED ON TO
UHF CB RADIO					
GAZEBO X 2					
CLUB BANNER					
LONG HANDLE SHOVEL					
SHORT HANDLE SHOVEL					
CHAINSAW					
CHRISTMAS TREE					
EVENTS	AVAILABLE FOR FREE USE BY ALL MEMBERS ON CLUB				

***NOTE: THIS LIST IS CURRENTLY UNDER REVIEW***



# BIRTHDAYS



Date	Name	Date	Name	Date	Name
<b>January</b>		<b>February</b>		<b>March</b>	
7th	Bob Heasman	14th	Ray Willis	2nd	Dave Melbourne
11th	Marian Granland	18th	Judy Anderson	6th	Jenny Downe
22nd	Paul DiGiorgio			12th	Steve Waterman
28th	Marlyn Corderoy			14th	Angela Francis
				20th	Archie Lind
				30th	Mirella DiGiorgio
<b>April</b>		<b>May</b>		<b>June</b>	
11th	Keith Granland			3 <sup>rd</sup>	Stephen Lynch
12th	Ron Francis			4 <sup>th</sup>	Tony Downe
18th	Jan Setlak			5 <sup>th</sup>	Chris Scarce
20th	Joe Arrigo			21st	John Lyford
26th	Alan Clark				
<b>July</b>		<b>August</b>		<b>September</b>	
6th	Glenda Batten	21st	Lyn Willis	1 <sup>st</sup>	Linda Zeffert
9th	John Setlak	26th	Sue Melbourne	1 <sup>st</sup>	Kym Batten
24th	Ray Zaetskey			5 <sup>th</sup>	Steve Morris
				5 <sup>th</sup>	Ray Scarce
				19 <sup>th</sup>	Carol Clark
				20 <sup>th</sup>	Audrey Heasman
				21 <sup>st</sup>	Phil Anderson
<b>October</b>		<b>November</b>		<b>December</b>	
1st	Dave Clark	5th	Elisa Arrigo	7th	Sue Morris
4th	Karen Lind			19th	Gabbie Zaretsky
6th	Kerri Waterman			24th	John Corderoy
7th	Penny Clark				
27th	Mark Bolton				